

Volume 68 Issue 4  
[WWW.samratx.org](http://WWW.samratx.org)  
April 2010

# SPLITSWITCH

Home of the San Antonio & Northern Railroad

## A Short Blast From the Headend

Just in case you've been out of touch, let me inform you that your organization, SAMRA is hosting this year's convention of the Lone Star Region of the NMRA. The most recent meeting for the Alamo Rails, LSR convention gave a good indication on just how fast this convention is bearing down on us. Model railroaders will be traveling to San Antonio from all over Texas and Louisiana in early June. While here they will attend clinics on model building, visit layouts and industries, and operate trains. Under the new NMRA guidelines you don't even have to be an NMRA member to attend, but you do have to pay an additional fee. A much better deal is the six month NMRA membership for just \$9.95, which includes six issues of the Marker Lamp, NMRA's excellent magazine. To take advantage of this deal just log onto [www.nmra.org](http://www.nmra.org) and sign up for the 6 month Rail Pass. What a bargain! If you really want to get involved in model railroading, there is no better way than to attend one of these conventions. Plan to attend the 2<sup>nd</sup> through the 6<sup>th</sup> of June and go to the SAMRA website and click Alamorails tab to get your registration form. It's a great chance to attend outstanding clinics and socialize with some really great model railroaders.



## 62 Days to LSR 2010 As of 1 March

Located in this month's Splitswitch is a proposed list of rules to be followed while running trains on the San Antonio Northern Railroad. I would like to hear back from the membership about posting and adhering to the items on this list. If we missed anything, or you believe clarification is needed on some item, please let me or one of your board members know.

Model railroaders tend to also be collectors. It just seems to go with the basic hobby persona. Cars, locomotives, and kits of all descriptions tend to find their way into the inventory and may, or may not ever be used. Some model railroaders purposefully branch off into other areas and collect real railroad memorabilia like china, lanterns, paper items or buttons and pins. Some fill up file cabinets with plans, drawings and photos pertaining to railroads. A few of them may even build a layout. Whatever you decide to do in the hobby is totally up to you. That's what makes this such a great hobby. You don't have to settle on any one phase, but can pick and choose that part that fits your time, ability, interests and pocketbook. Model railroading is fun.

Ron Nagel



San Antonio Model Rail Road Association, Inc.



### Items of Interest

- Maintenance Crew #2 Workdays April 10 & 24
- Monday Morning Breakfast Group 8A Mondays @ Denny's - 281 and Bitters
- Layout Management Committee meeting 7P April 5
- BOD meeting 7:30P April 6
- General Membership Meeting Friday, 7:30P April 9
- LSR Planning Meeting March 29, April 12 7P

### Inside This Issue [President's Letter](#)

[Maintenance Crews, Cans, New Members](#)

[Monthly Calendar, Birthdays/Anniversaries, LSR Stuff](#)

[Yaak from Kaak](#)

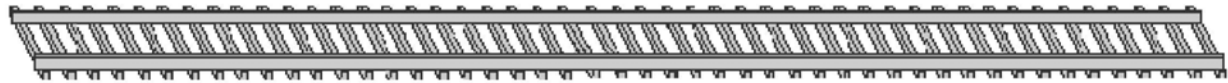
[Everyone's Responsible](#)

[Meeting Minutes](#)

[Donations, Operating Rules](#)

[May Meeting Plans](#)





**NEW MEMBER(S)**

Please welcome new members Carl Reiser and John Worsham!



**CHANGES IN CONTACT INFORMATION**

In you change an address, email, phone #, etc., please let us know.

If you don't tell us, we don't know!

**Maintenance Team #2**

Team 2 will meet for museum "beautification" on April 10 and 24. Members are:

Al Boos

Stan Adams

Charles and Sandy Barnes

Gary and Lynn Brown

Donald Bryan

Harold Bryant

Jim Connor

Mady Dodson

Bill Gray

Wayne and Lois Hammelman

Shelley and Ben Hedges

Donald Hoisek

Ernie and Mary Lou Kaak

Dick Keith

Jim Ladd

Gerald Lien

Jack Morgan

Ron Nagel

Dennis Pierce

Dale Reed

Allen Tindel

Jim Tucker



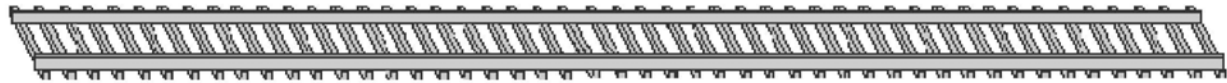
**"CANS"**



Remember to bring your empty aluminum cans to SAMRA for recycling. The money made from recycling cans goes into the general fund to help pay for the needs of the club. This is an easy way to put some extra money into the treasury without digging into your pockets.

**PLEASE HELP!**





APRIL 2010

Sunday	Monday	Tuesday	Wednesday	Thursday	Friday	Saturday
				1 Fun Run 7-9P	2	3 Workday 8A-12P
4 Fun Run 1P-4P	5 MMBG Work Night 6:30 -9P LMC 7P	6 BOD 7:30P @ Museum	7 Workday 9A-2P	8 Fun Run 7-9P	9 General Membership Meeting 7:30P	10 Maint. Crew 2 OPS 1-4P Workday 8A-12P
11 Fun Run 1P-4P	12 MMBG Work Night 6:30 -9P LSR Planning Meeting 7P	13	14 Workday 9A-2P	15 Fun Run 7-9P	16	17 Workday 8A-12P OPS 10A-2P
18 Fun Run 1P-4P	19 MMBG Work Night 6:30 -9P	20	21 Workday 9A-2P	22 Fun Run 7-9P	23	24 Maint. Crew 2 Workday 8A-12P
25 Fun Run 1P-4P	26 MMBG Work Night 6:30 -9P	27	28 Workday 9A-2P	29 Fun Run 7-9P	30 BreakfastOPs 8A at Denny's 9A-Noon Ops Session	

MMBG – Monday Morning Breakfast Group meets 8:00A @ Denny's 281 and Bitters  
 LMC - Layout Management Committee

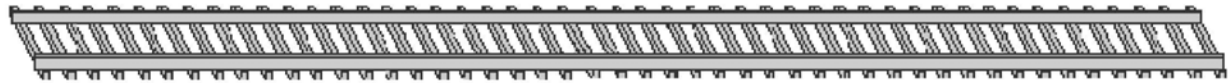
- April BIRTHDAYS**
- 2 Gayle Cook
  - 5 Sharon Mainz
  - 5 Charlie Spangler
  - 11 John Talley
  - 21 Gary Raffaele
  - 26 Virginia Atterberry
  - 27 Donald Hoisek
  - 29 Ralph Alexander
  - 30 Lynn Brown
  - 30 Al Adams

- April ANNIVERSARIES**
- 1 Gary and Lynn Brown
  - 8 Jim and Mary Tucker
  - 18 Allen and Beverly Tindel
  - 28 Larry and Ruby Martin

LSR Convention Stuff!

Volunteers are needed to staff the LSR convention, Alamo Rails 2010, June 2 - 6. You must be an NMRA member and are needed to help from 8:00 a.m. to 10:00 p.m. in such areas as registration, the company store, security, and prototype tours. Please email Lynn Brown at [lsrvolunteers@yahoo.com](mailto:lsrvolunteers@yahoo.com) the days and times you would like to help.





### HOME LAYOUT TOUR

No information on any home layout tours  
For the month of March



### YAAK from KAAK



Don't forget—the "Grady BBQ Picnic", scheduled for April 9, 2010 will be moved to May 14, 2010.

With the Budget approved and the election of two Board members in May, we can now move forward to the Lone Star Region Convention, "Alamo Rails", June 2-6, 2010. Please sign up to help. After that it will be our Summer show, July 31-August 1, 2010. This show has moved to Live Oak Civic Center- same place as our Jamboree.

In the past, SAMRA members used to help cut the grass on Saturdays. Due to the 90 to 100 degree weather, this became quite a chore for most of us, so the Board budgeted \$900.00 a year to cover the expenses of a professional lawn company. At that time, members promised to donate \$'s to our Grass Fund Can. The can is by the sign in sheet and the grass and weeds are growing!!!!

#### **Everyone's Responsible – by Jack Siegel- Assistant Museum Director**

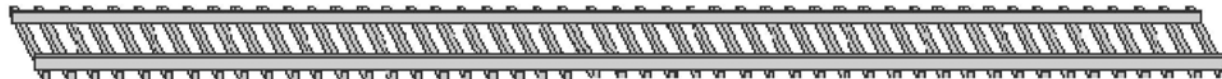
We've got a lot of different activities going on at the Bob Clarke Museum – ops sessions, work sessions, and meetings of all kinds. Whenever you have that much action in one place, a certain amount of trash is bound to result. We need EVERYBODY's help to keep the Museum a clean place to run trains and have fun doing model railroading crafts. We used to be able to keep the building clean with just our monthly maintenance crews, but now there's just too much activity- so we need EVERYONE to help clean up after each time you use the facilities.

I recommend that 15 minutes before your work or ops session ends, YOU pick up the cans and trash that needs to be pitched – we'll take care of it from there. We're slowly cleaning out the areas beneath the layout also. Place big items near the door or outside so that we can make more room for future activities.,

We all have an investment of thousands of dollars in equipment and thousands of hours of work in our layout, office area, and work spaces. Keeping things clean will protect this and really help us keep things working in the future.

EVERYONE'S RESPONSIBLE. Thanks for our cooperation!





**SAMRA General Membership Meeting 3/12/2010**

Prior to the meeting, Mr. Taylor Rogers from Graceland at Garden Ridge Assisted Living made a presentation seeking support of their community by SAMRA.

President Nagel called the meeting to order at 7:30 p.m.

The minutes from the previous meeting were approved.

New members Carl Reiser and John Worsham were announced.

R. Alexander reported that he was analyzing attendance data from the Jamboree and preparing the vendor letter for the Summer show. Approximately 50 tables have been sold for the Summer show, and 100 tables have been sold for the next Jamboree.

J. Lowrance reported on LMC activity, including the focus on installing the telephone system before the LSR convention. An effort is also underway to convert forty-five turnouts to DCC friendly turnouts as an attempt to solve reported decoder burnout problems. The turnout replacement will be a systematic effort and is expected to require several months to complete.

P. Steves provided an update on the LSR convention. The next meeting will be on 3/15/2010. Members were encouraged to fill out the NMRA application. More details are available on the LSR website, [www.alamorails.org](http://www.alamorails.org).

W. Hammelman reported that about 55 LSR cars have been sold.

The planned April meeting at Grady's has been postponed until May, and the April meeting will be held at the museum.

C. Booth noted that two board members at large are up for election this year, and he asked for candidates for those positions. Nominations are due in April, with the elections in May, but nominees may step forward up until the date of the election.

The Schertz library has asked SAMRA to set up a train display for approximately one month beginning at the end of April, and Tom Castanos volunteered to organize this action.

A discussion was held of the recent stroke suffered by Gil Freitag. A long-term recovery will likely be required. An email address will be established for sending greetings to Gil. More details will be provided when they are available.

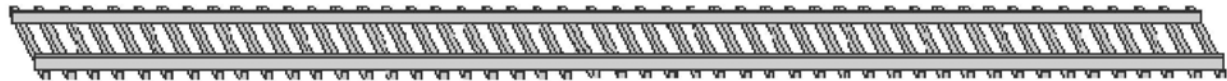
J. Lowrance noted that NMRA members have until April 15 to submit their ballots.

W. Hammelman presented the proposed budget for March 1, 2010 to February 28, 2011. After discussion, the membership approved the proposed budget subject to specific changes including (i) a date correction, (ii) a change in CPS expense allocation, and (iii) establishing a balanced budget by increasing the donations amount.

Al Boos noted that Amtrak has requested a display on National Train Day on 5/6, and he will lead that effort.

After the meeting, S. Priegel conducted a clinic on ballasting track.

President Nagel adjourned the meeting at 8:30 p.m.



April Donations

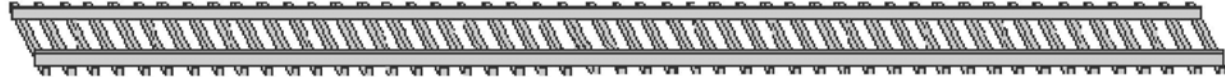
Ron Nagel	5 books, lettering diagrams, book 1 & 2- Narrow Gauge Modular Model Railroads
Nell Forist	7 railroad books, passenger car, 4 dummy engines, a building kit, and 3 bridge truss kits
Jack Siegel	Seaboard Coast Line Athearn cabooses
Don Scott	Miscellaneous building parts, switch tower kit, engine house, Dremel engraver, 2 HO cars, bakery structure
Anonymous	Atlas turn table, DC power pack, loco maintenance building kit, 1 engine, 6 cars

**LAYOUT OPERATING RULES**

1. The SAMRA member hosting the session is the final authority in enforcing these rules.
2. All private Locomotives and rolling stock will be in good operating order before being placed on the layout.
3. Operators are solely responsible for the good operation of their train and will ensure switches ahead of their train are properly set and that they have clearance before proceeding.
4. Any locomotive or rolling stock that constantly derails, shorts, uncouples or creates a delay in the operation of other members trains, will be removed immediately.
5. Sound systems will be set so that the operator can hear the train, while standing next to it. Sound systems that are set to levels that can be clearly heard in another aisle will be disabled or removed until the sound is adjusted to a satisfactory level.
6. No locomotive decoders will be operated on ID three.
7. Cars spotted throughout the layout and in the yards will not be removed to another location except during operating sessions.

Equipment stored in the Fun Run Yard may be used to make up trains during the Fun Run session, but must be returned to the Fun Run Yard at the end of the session.





**2010 SPRING GET TOGETHER !!!!!  
MAY SAMRA MEETING  
FRIDAY May14 after 6:00pm**

**Meet at Grady's at 6510 San Pedro starting after  
6:00 pm  
(corner of San Pedro & Jackson Keller)**

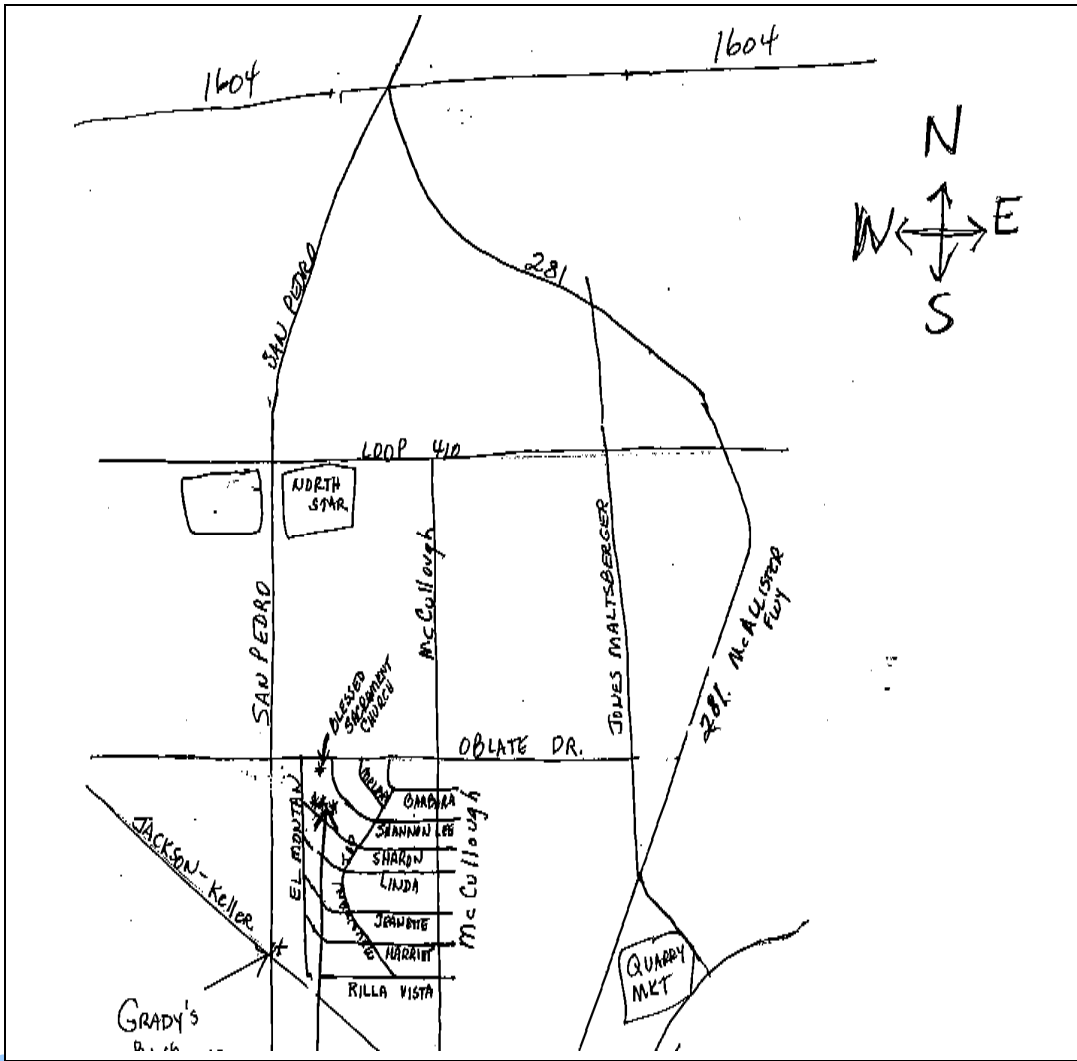
Go through line, order what you want & pay for your order. Then go into the party room to the right as you enter. **I will still have to let the manager know how many will be coming so you need to RSVP (coming or not) to Sharon or Joe Mainz 822-6409**

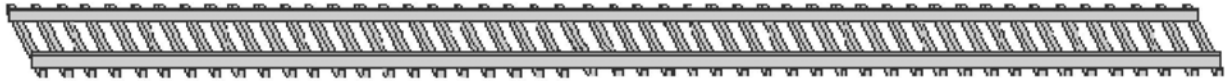
**After eating we will meet at Joe & Sharon Mainz's house, 111 Sharon Dr., at 7:30pm**

Meeting, **DESSERTS**, coffee, socializing -- and you get to see Joe's layout too!! Our house is only about 3 blocks from the Grady's.

See map on next page or call for more details or directions

**HOPE TO SEE YOU GRADY'S AND/OR AT OUR HOUSE FOR MEETING & DESSERT**





## SAMRA Clinics

Scott Priegel gave an excellent clinic on ballasting after the February meeting.

If you have ideas for a clinic or would like to present one, please contact Wayne Hammelman

**Buy your LSR Promo Car!**

The Splitswitch  
San Antonio Model Railroad Association, Inc  
7702 Narrow Pass St.  
Live Oak, TX 78233-2947  
[www.samratx.org](http://www.samratx.org)

**First Class Mail**



**Coming Events**

**LSR Convention!  
Be There, or Be Square!**

